



Recombinant Mouse IL-1R2 (C-6His)

Catalog #	EPT134
Expression Host	Human Cells
DESCRIPTION	Recombinant Mouse Il1r2 Protein/IL-1 RII is produced by our Mammalian expression system and the target gene encoding Phe14-Glu355 is expressed with a 6His tag at the C-terminus.
Accession	P27931
Synonyms	Interleukin-1 receptor type 2; IL-1R-2; IL-1RT-2; IL-1RT2; CD121 antigen-like family member B; CD121b; IL-1 type II receptor; Interleukin-1 receptor beta; IL-1R-beta; Interleukin-1 receptor type II; CD121b
Mol Mass	39 KDa
AP Mol Mass	45-60 KDa, reducing conditions
Purity	Greater than 95% as determined by reducing SDS-PAGE.
Endotoxin	Less than 0.1 ng/μg (1 EU/μg) as determined by LAL test.





FORMULATION

Lyophilized from a 0.2 μm filtered solution of PBS, pH 7.4.

RECONSTITUTION

Always centrifuge tubes before opening. Do not mix by vortex or pipetting.

It is not recommended to reconstitute to a concentration less than 100 $\mu\text{g/ml}$.

Dissolve the lyophilized protein in distilled water.

Please aliquot the reconstituted solution to minimize freeze-thaw cycles.

SHIPPING

The product is shipped at ambient temperature.

Upon receipt, store it immediately at the temperature listed below.

STORAGE

Lyophilized protein should be stored at $< -20^{\circ}\text{C}$, though stable at room temperature for 3 weeks.

Reconstituted protein solution can be stored at $4-7^{\circ}\text{C}$ for 2-7 days.

Aliquots of reconstituted samples are stable at $< -20^{\circ}\text{C}$ for 3 months.

BACKGROUND

Mouse Interleukin 1 receptor, type II (IL1R2) is a cytokine receptor that belongs to the interleukin-1 receptor family. This protein binds interleukin alpha (IL1A), interleukin beta (IL1B), and interleukin 1





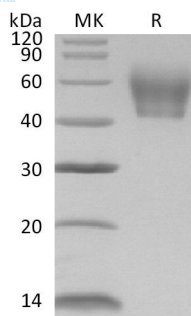
receptor, type I (IL1R1/IL1RA), and acts as a decoy receptor that inhibits the activity of its ligands. IL-1R2 structurally consisting of a ligand binding portion comprised of three Ig-like domains, a single transmembrane region, and a short cytoplasmic domain. It is expressed in a variety of cell types including B lymphocytes, neutrophils, monocytes, large granular leukocytes and endothelial cells. Mouse IL1RII shares 59% amino acid sequence homology with human IL1 RII in their extracellular domains. The pleiotropic cytokine IL1 is produced to regulate development and maintenance of the inflammatory responses, and binds to specific plasma membrane receptors on cells. Two distinct types of IL1 receptors which are able to bind IL1 specifically have been identified, designated as IL1RI (IL1RA) and IL1RII (IL1RB). IL1R1 contributes to IL-1 signaling, whereas the IL-1R2 has no signaling property and acts as a decoy for IL-1.





ELK Biotechnology

SDS-PAGE



+86-27-59760950

ELKbio@ELKbiotech.com

www.elkbiotech.com

23-2, No.388 Gaoxin 2nd Road, Wuhan East Lake Hi-tech Development Zone, Hubei, P.R.C