



ELK Biotechnology

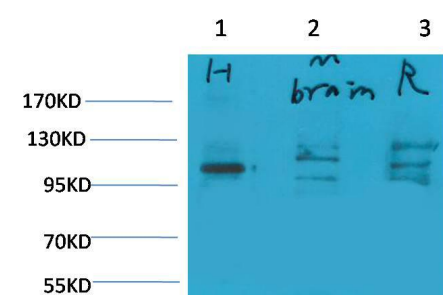
Glutamate Receptor 1 Rabbit pAb

Catalog NO.: EA265

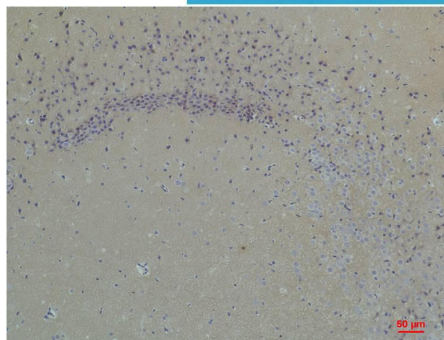
For research use only.

Overview

Product name	Glutamate Receptor 1 Rabbit polyclonal antibody
Source	Rabbit
Applications	WB, IHC
Species reactivity	Human, Rat, Mouse
Recommended dilutions	WesternBlot:1/1000-2000 Immunohistochemistry:1/50-100 NOTE: Optimal dilutions should be determined by the end user.
Immunogen	Synthetic Peptide
Species	Human
Storage	PBS with 0.02% sodium azide and 50% glycerol pH 7.4. Store at -20° C. Avoid repeated freeze-thaw cycles.
Isotype	IgG
Clonality	Polyclonal
Concentration	1 mg/ml
Observed band	100kDa
GeneID (Human)	2890
Human Swiss-Prot No.	P42261
Cellular localization	Cell junction, Cell membrane, Cell projection, Endoplasmic reticulum, Endosome, Membrane, Postsynaptic cell membrane, Synapse
Alternative Names	GLUR1 antibody, GluA1 antibody, Glutamate receptor ionotropic antibody, GluRK1 antibody
Background	Glutamate receptor 1 is a protein that in humans is encoded by the GRIA1 gene. The receptor then desensitizes rapidly and enters a transient inactive state, characterized by the presence of bound agonist.



Western blot analysis of 1) Human Brain Tissue, 2) Mouse Brain Tissue, 3) Rat Brain Tissue with Glutamate Receptor 1 Rabbit pAb EA265 diluted at 1:2,000.



Immunohistochemical analysis of paraffin-embedded Rat Brain Tissue using Glutamate Receptor 1 (EA265) Rabbit pAb diluted at 1:200.